

HEBBECASTLE DOWN

WARFIELD, RG42 2QD

2 1 2 1

EPC C Council Tax Band D

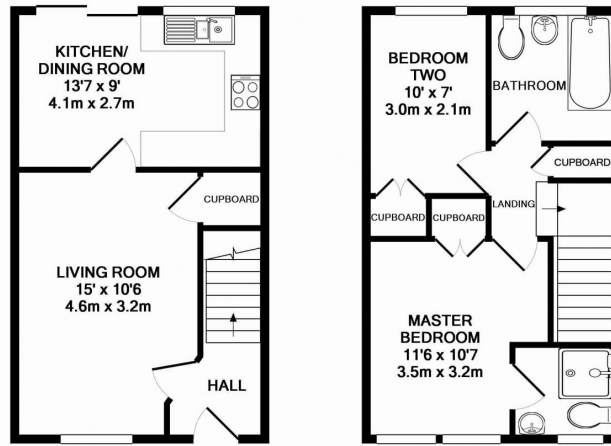
£350,000
FREEHOLD



Scan
for full
details



Floor Plan



GROUND FLOOR
APPROX. FLOOR
AREA 324 SQ.FT.
(30.1 SQ.M.)

1ST FLOOR
APPROX. FLOOR
AREA 324 SQ.FT.
(30.1 SQ.M.)

TOTAL APPROX. FLOOR AREA 649 SQ.FT. (60.3 SQ.M.)

Whilst every attempt has been made to ensure the accuracy of the floor plan contained here, measurements of doors, windows, rooms and any other items are approximate and no responsibility is taken for any error, omission, or mis-statement. This plan is for illustrative purposes only and should be used as such by any prospective purchaser. The services, systems and appliances shown have not been tested and no guarantee as to their operability or efficiency can be given
Made with Metropix ©2013

Property Photos



Score	Energy rating	Current	Potential
92+	A		
81-91	B		90 B
69-80	C	72 C	
55-68	D		
39-54	E		
21-38	F		
1-20	G		



CLIMATE
POSITIVE
WORKFORCE

The Property
Embedment

aria/propertymark
PROTECTED

TDS
member

MAYFAIR
OFFICE GROUP

rightmove ZOOPLA

PRO
SPECT

PROSPECT.CO.UK

11 County Lane, Warfield,
Berkshire, RG42 3JP

t: 01344 207 404

e: warfield@prospect.co.uk

Anti-Money Laundering: We are required by law to conduct anti-money laundering checks on all those selling or buying a property. Whilst we retain responsibility for ensuring checks are carried out correctly and for ongoing monitoring, the initial checks are carried out on our behalf by Lifetime Legal who will contact you once you have agreed to instruct us in your sale or had an offer accepted on a property you wish to buy. The cost of these checks is £80 inc VAT, which covers the cost of obtaining relevant data and any manual checks and monitoring which might be required. This fee is paid in advance, directly to Lifetime Legal and is non-refundable. Disclaimer: These particulars are produced in good faith and are believed to be correct, but their accuracy is no way guaranteed and they do not form part of a contract. We have not carried out a detailed survey, nor tested the services, appliances and specified fittings. Room measurements are approximate. The floor plan is for layout guidance only and not drawn to scale. Window and door openings are approximate. Whilst every care is taken in the preparation of this floor plan, please check all dimensions, shapes and compass bearings before making any decision reliant upon them.